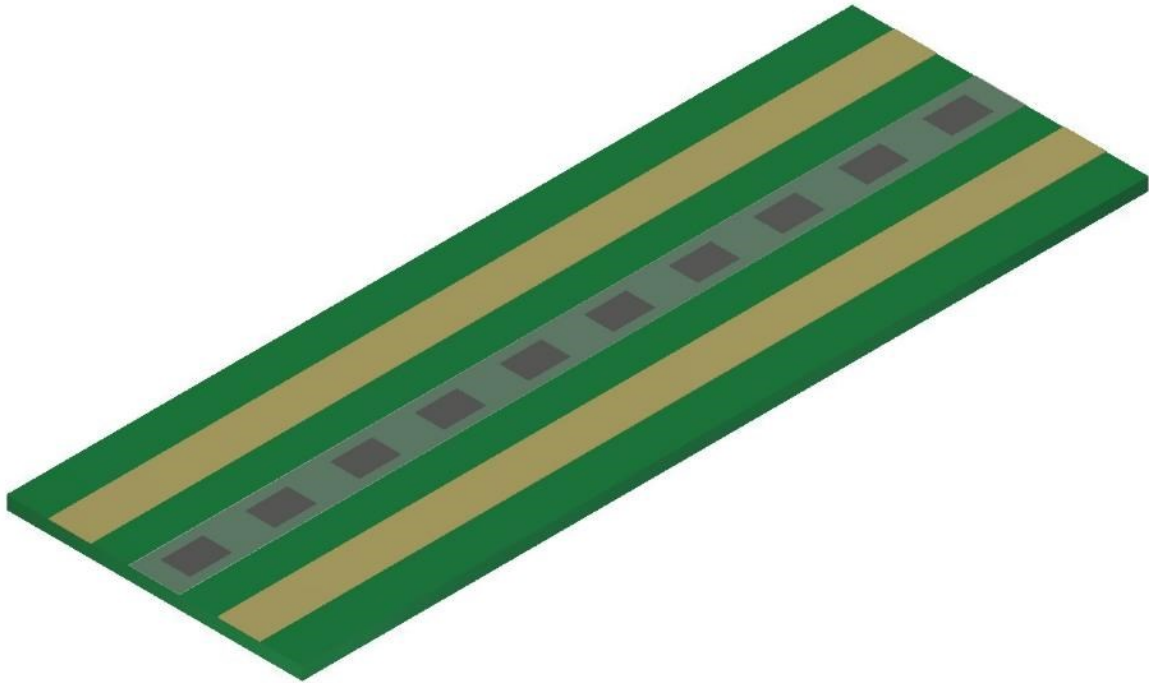


matteco ecostep type F

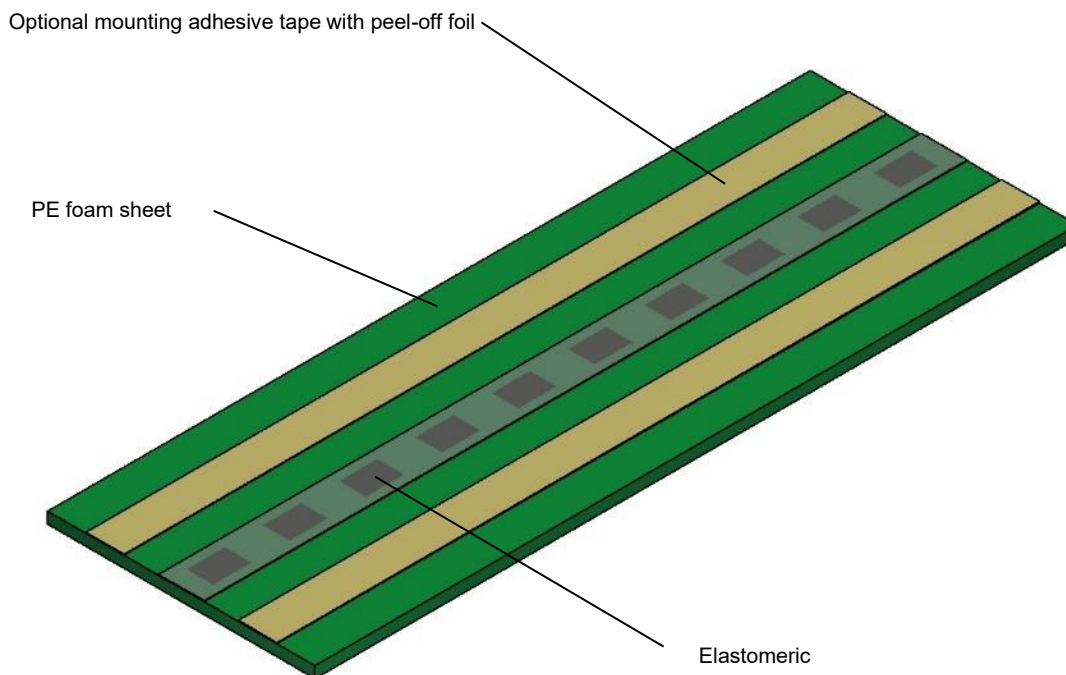


matteco ecostep type F

Staircase bedding or impact sound insulation between precast staircase flight and floor slab.

Performance features

- Ecologically and sustainably manufactured and tested matteco elastomer bearing ELR 8 from our own production.
- High-quality and easily cut PE foam.
- Acoustically tested according to DIN EN ISO 10140-3 and DIN 7396.
- Two load capacity classes, V_{RD} : 43 kN/m and V_{RD} : 60 kN/m. Further load capacity classes on request.
- Length can be adjusted by the customer in 100 mm steps.
- Optional: pre-mounted assembly adhesive tapes for quick and safe stair assembly.



Variants

- matteco ecostep type F is available in standard lengths from 1,000 mm to 1,500 mm in 100 mm steps and in widths of 350 mm and 600 mm.
- Special sizes on request.

Type designation for ordering

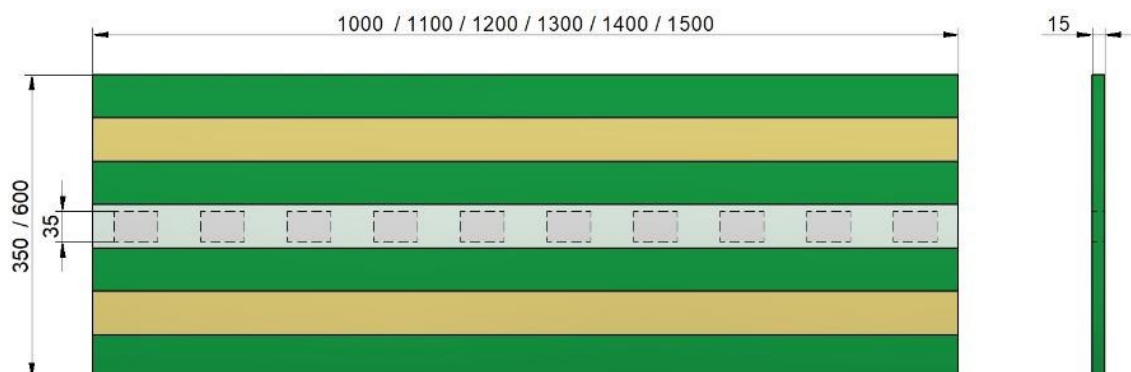
- matteco ecostep type F - length - width - load capacity class
matteco ecostep type F - 1,500 - 350 - L

Technical data

Description	Value	
Designation:	matteco ecostep type F	
Load capacity class L, V_{RD} :	43 kN/m	
Load capacity class H, V_{RD} :	60 kN/m	
Further load carrying capacity classes on request!		
Length:	1,000 mm to 1,500 mm, step size 100 mm	
Thickness:	15 mm	
Width:	350 mm or 600 mm (others on request)	
Elastomer:	matteco ELR 8 -15	
Material Elastomer:	Rubber powder with special binding agent (no PU)	
Material PE foam:	Cellular polyethylene, chemically cross-linked	
Impact sound level difference ΔL_w^* :	DIN EN ISO 10140-3	DIN 7396
	32 dB with V_{RD} : 43 kN/m 35 dB with V_{RD} : 60 kN/m	25 dB with V_{RD} : 43 kN/m 24 dB with V_{RD} : 60 kN/m
Fire behaviour: according to DIN EN 13503	Efl	
Dangerous substances:	none	

Remark:

- matteco ecostep type F is used exclusively for the transmission of vertical forces and low horizontal forces.



The values given above are indicative and have been determined over a longer, representative period of time in accordance with applicable testing standards or internal company methods. However, they are not considered binding specifications and are therefore in no way to be understood as an express assurance of certain properties. We reserve the right to make further technical developments and to reprint data sheets.

Assembly instructions

- Depending on the static load, a deflection of the matteco ELR elastomer bearing of approx. 2.5 mm to 4.5 mm is to be expected.
- The position of the elastomeric bearings is specified in the PE foam sheet and must not be changed. Length adjustments must be made symmetrically.
- To avoid sound bridges between the staircase and the staircase wall, it is recommended to combine the staircase supports matteco ecostep type F with the joints of matteco ecostep type S adjustment plates. This ensures acoustic decoupling.
- To avoid sound bridges between staircase and landing, it is recommended to use matteco ecostep type Z stair supports.