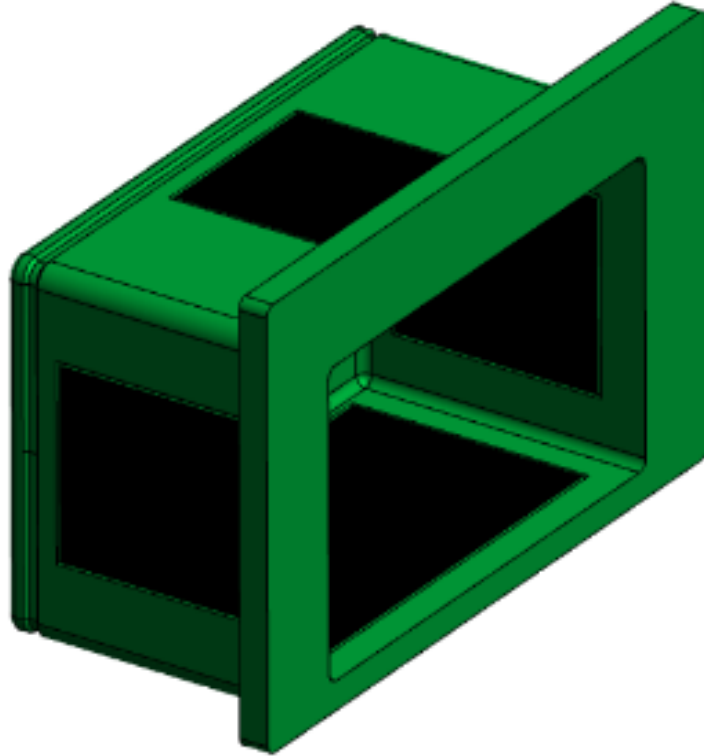


matteco ecostep type B



matteco ecostep type B

matteco ecostep B landing supports very efficiently decouple impact sound vibrations from the stair landing to the staircase and other adjacent building components.

Depending on the design, horizontal and vertical transverse forces can be transmitted.

Performance features

- Ecologically and sustainably manufactured and tested matteco elastomeric bearings from our own production
- Supporting element with type approval.
- Impact sound level difference ΔLw^* up to 35 dB.
- Acoustically tested according to DIN EN ISO 10140-3.
- High-quality sound insulation body with stable flange for installation in wall element.
- Fire resistance class F90.
- For in-situ concrete or precast concrete platforms.
- Safe and simple assembly / fastening.

Technical data

Description	Value		
variants:	B / u	B / u-o	B / u-o-r-l
Load directions:	below	bottom / top	bottom / top right / left
Load capacity below V_{Rdu} :	76.0 kN		
Load capacity top V_{Rdo} :	17,30 kN		
Load capacity right / left $H_{Rd,r/l}$:	17,30 kN		
Thickness of platform:	≥ 160 mm		
Dimensions concrete console:			
Height:	158 mm		
Width:	252 mm		
Depth:	152 mm		
Impact sound level difference ΔLw^* :	up to 35 dB		
Fire behaviour: according to DIN EN 13503	Efl		
Dangerous substances:	None		

Variants

- Option with spacer "S" for use in in-situ concrete.
- Option with support element "T".

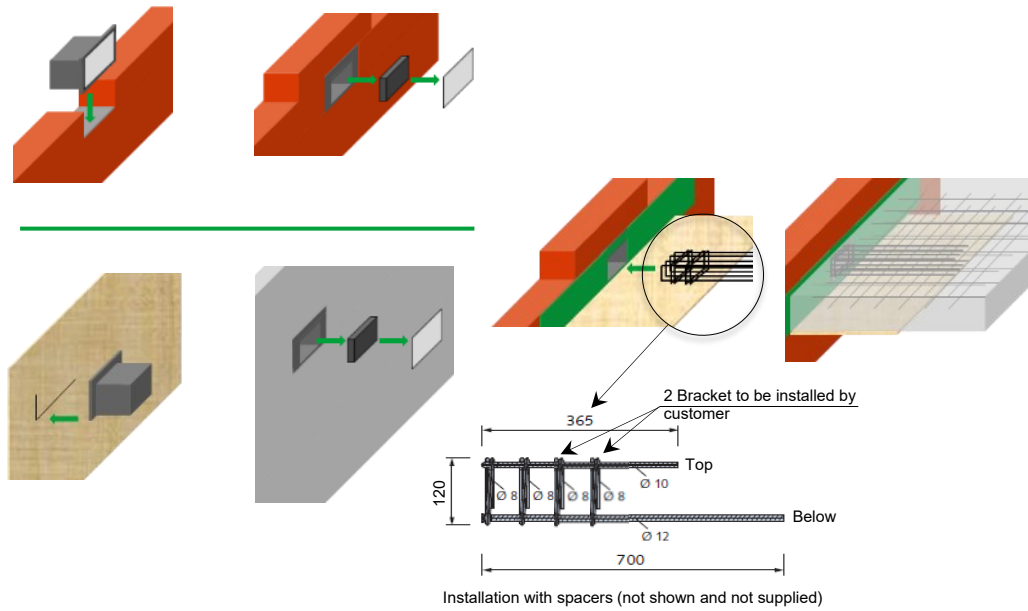
Type designation for ordering

- matteco ecostep type B / Load direction / Option in-situ concrete / Option load-bearing element
matteco ecostep type B / u-o / S / T

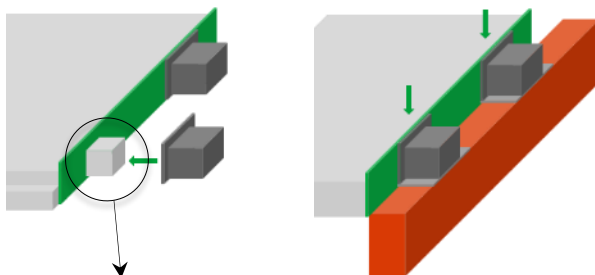
The values given above are indicative and have been determined over a longer, representative period of time in accordance with applicable testing standards or internal company methods. However, they are not considered binding specifications and are therefore in no way to be understood as an express assurance of certain properties. We reserve the right to make further technical developments and to reprint data sheets.

Assembly instructions

In-situ concrete platform



Prefabricated pedestal



Dimension concrete console
 height: 158 mm
 width: 252 mm
 depth: 152 mm