

matteco decoupling plates EKP

matteco EKP decoupling panels are used for permanently elastic support of buildings, building parts, machine foundations, for spring-mass systems, for structure-borne sound insulation under floors and as vibration protection.

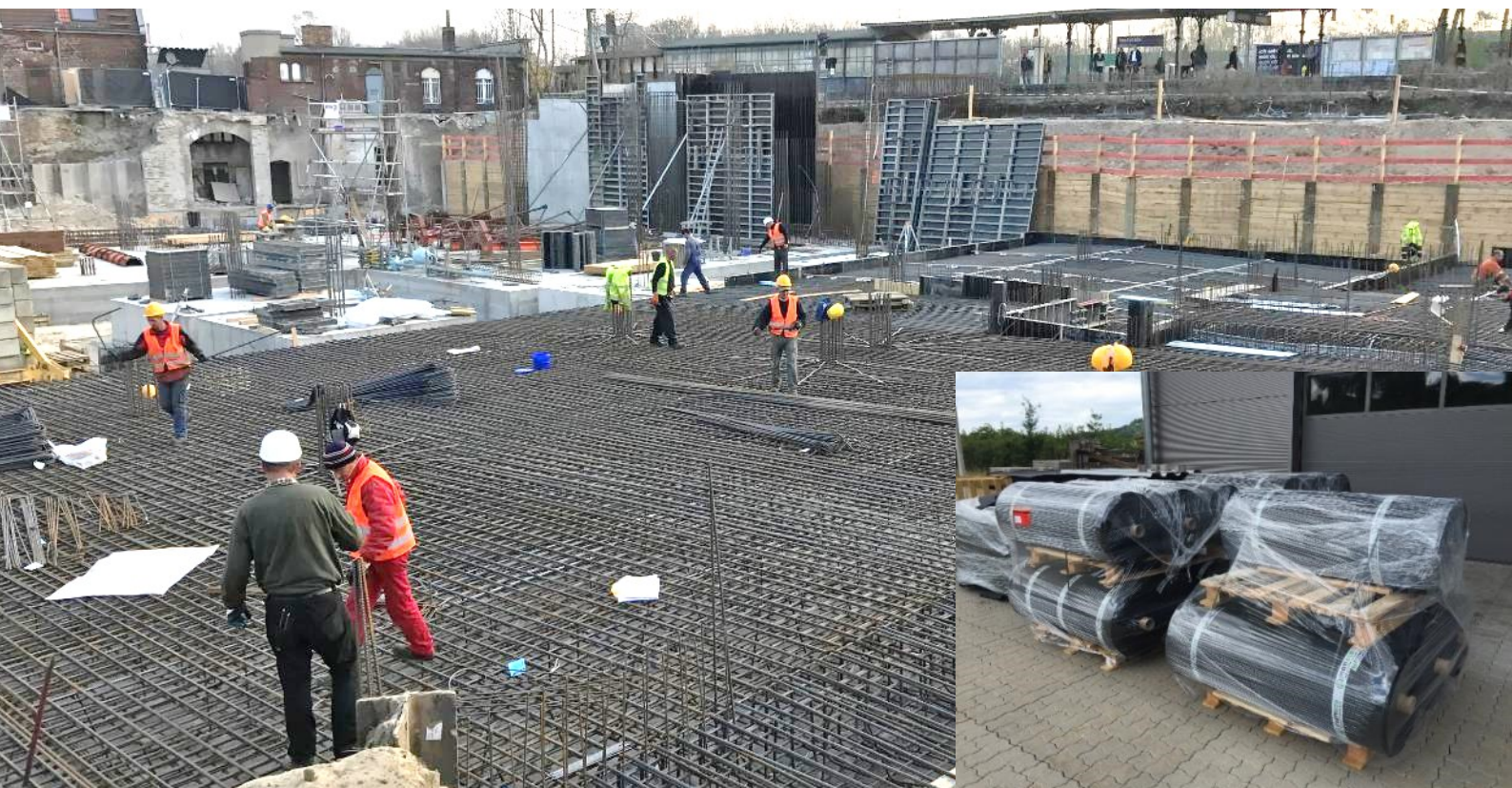
Performance features

- Ecological and sustainable production.
- Closed surface on top and bottom.
- Excellent structure-borne sound insulation.
- Permanently elastic.
- Very high homogeneity.
- High resilience.
- Very robust and durable.
- Rot-proof.
- 100% recyclable.



Delivery forms

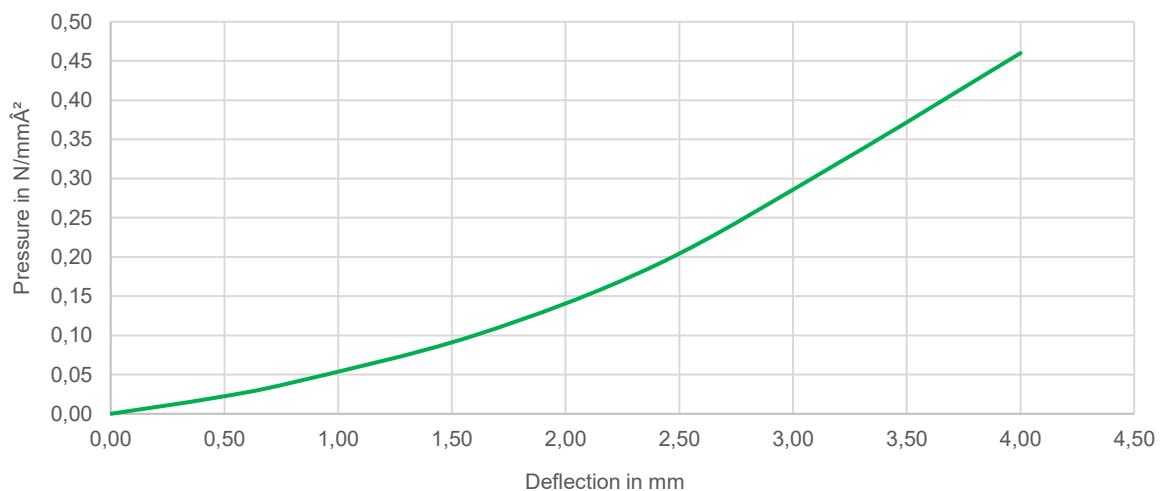
- matteco decoupling plates EKP are available in the standard length of 1,000 mm and the standard width of 500 mm.
- Standard thickness: 10 mm, 15 mm, 20 mm.
- Special sizes on request.



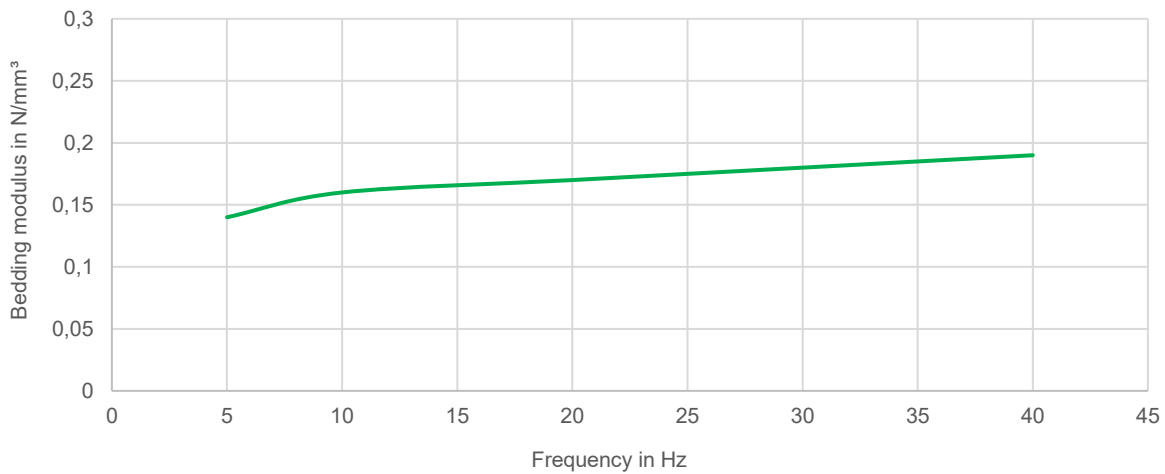
Technical data

Description	Value				
Material:	Recycled rubber powder with special binder (no PU binder)				
Color:	black				
Shape:	Plate, both sides flat				
Surface:	smooth, closed				
Thickness x length x width:	20 x 1,000 x 500 mm				
Weight:	approx. 10 kg				
Static bedding module:	0.1 N/mm ³ , with preload 0.02 to 0.1 N/mm ²				
Dynamic bedding modulus with preload 0.06 N/mm ² :	5 Hz	10 Hz	20 Hz	30 Hz	40 Hz
	0,14 N/mm ³ .	0,16 N/mm ³	0,17 N/mm ³	0,18 N/mm ³	0,19 N/mm ³
Natural frequency in Hz:	Pressure in N/mm ²				
	0.058 N/mm ²	0,116 N/mm ²	0,200 N/mm ²	0,300 N/mm ²	
Laying: 20 mm - 1 layer:	27 Hz	22 Hz	17 Hz	14 Hz	
Laying: 40 mm - 2-ply:	19 Hz	16 Hz	12 Hz	10 Hz	
Operating temperature:	-25°C to +50°C, briefly up to 70°C				
Thermal conductivity:	0,15 W/(m*K)				
Fire behaviour:	Efl				
Dangerous substances:	none				

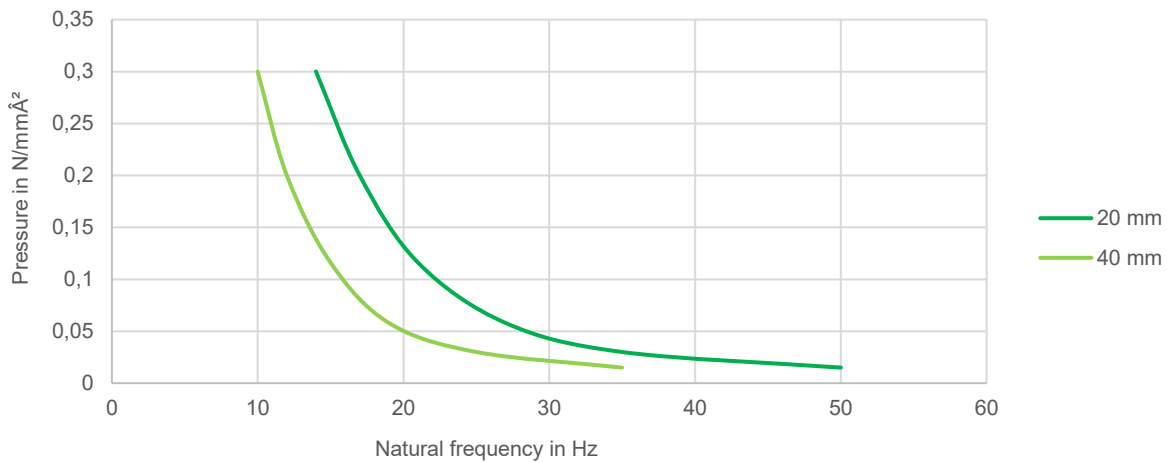
Deflection



dyn. bedding modulus



Natural frequency



Underground:

Direct contact with materials containing plasticizers should be avoided. Clean the floor free of concrete residues and other unevenness with a broom.

Relocation:

Impacts are fully pushed and glued. Cover the surface with 2-layer PE foil.

Processing notes:

When using auxiliary products, such as adhesives, the ambient temperature and humidity must meet the requirements of the auxiliary products used. The relevant product data sheets must be observed.

disposal:

No disposal costs - return by matteco GmbH

The values given in this brochure are standard values which have been determined over a longer, representative period of time in accordance with the applicable testing standards or internal company methods. However, they do not constitute binding specifications and are therefore in no way to be understood as an express assurance of certain properties. We reserve the right to make further technical developments and to reprint data s